

Orange County Public Schools



WINNER

the broad prize
for urban education



HARVARD • JOLLY
ARCHITECTURE

Site 52-M-SE-2
30% Design Community Meeting
July 29, 2015

Lake Nona Area Middle School Relief – Site 52-M-SE-2 Meeting Agenda

Lake Nona Middle School – 6pm

- Introductions
- Welcome – School Board Member
- Project Update – Facilities Meeting Organizer
Architect: Harvard Jolly Architects
Construction Manager: Wharton Smith Inc.
- Questions and Answers
- Adjournment

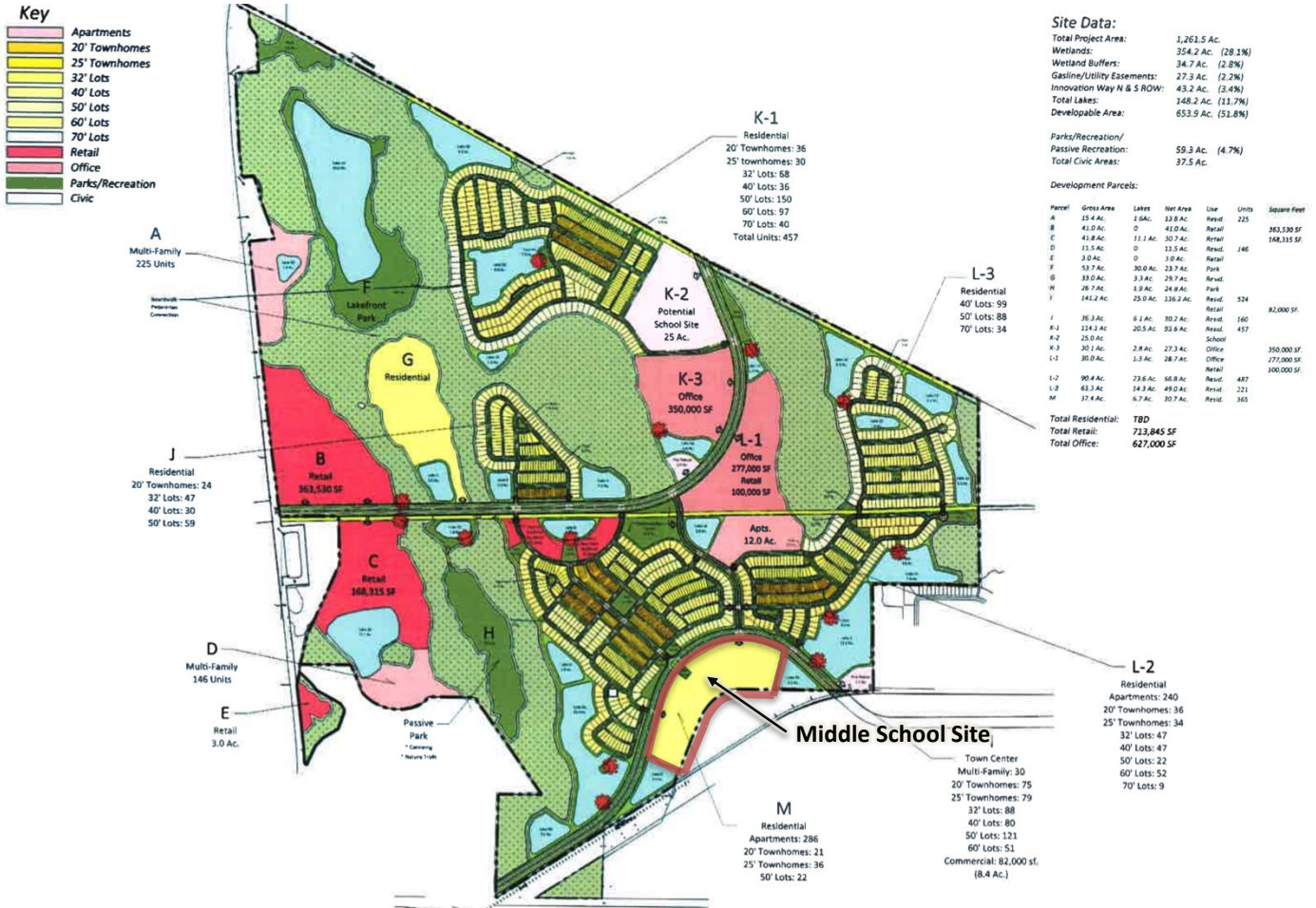
Orange County Public Schools



Site 52

Lake Nona Middle School

Orange County Public Schools



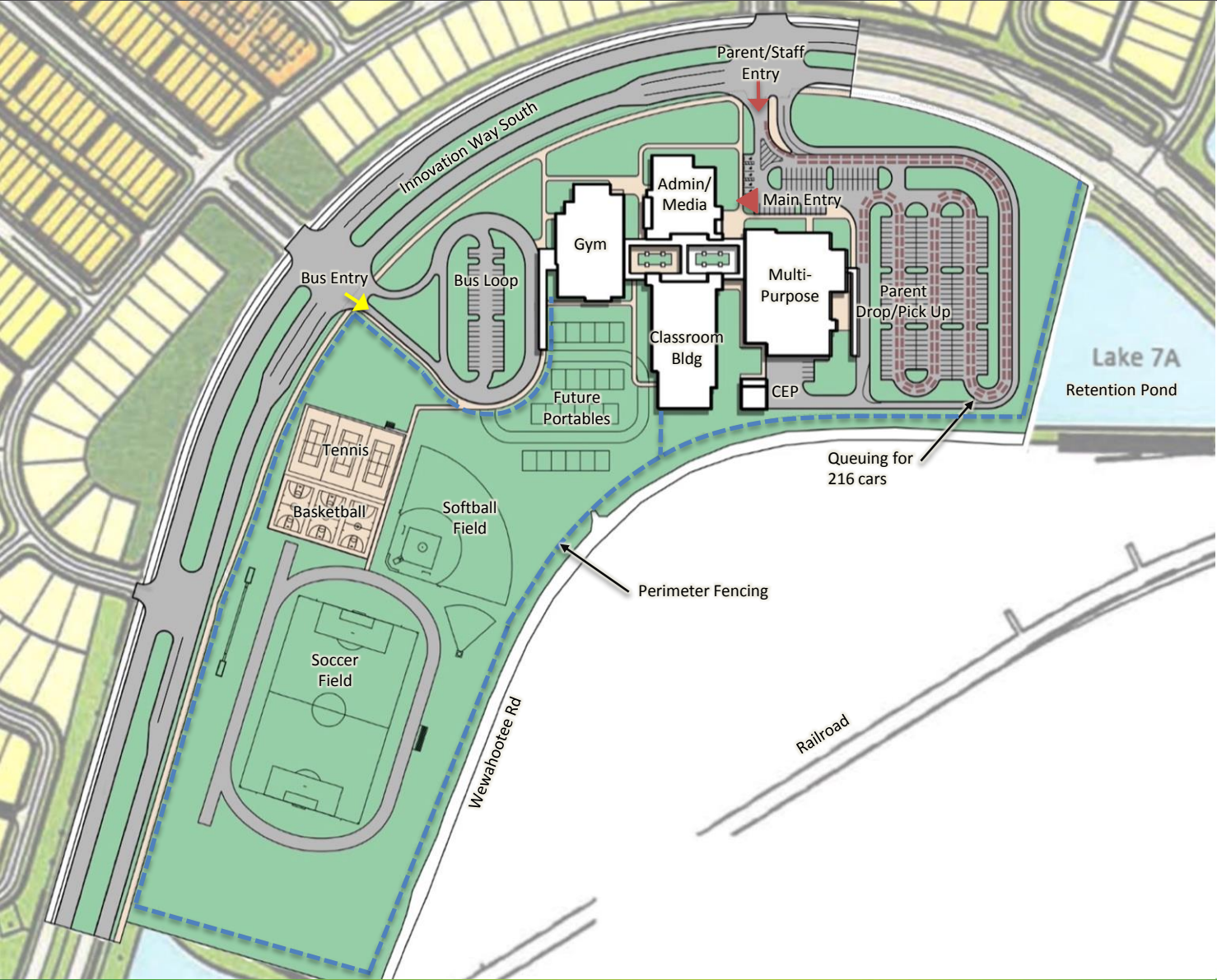
CONCEPT 11 CONCEPTUAL DIAGRAMMATIC MASTER PLAN INNOVATION PLACE

Master Plan Adjustments:
1. Move School Site to Parcel K-2.

5 Ac.



Orange County Public Schools

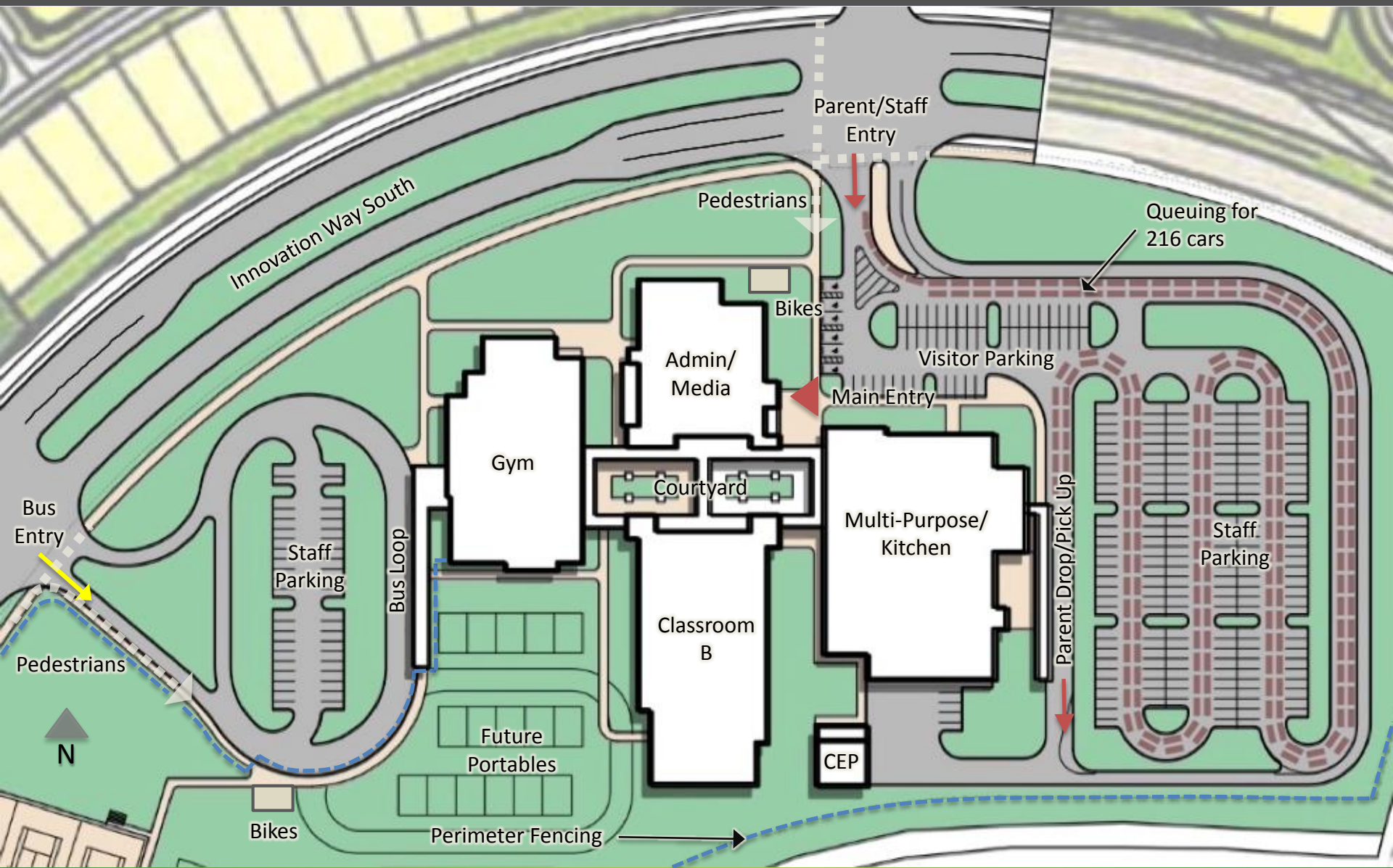


Site Data

School Capacity	1,213 Students
Parking Capacity	Provided - 201 Required - 169
Car Stacking	Provided - 216 Required - 136
Parent Canopy	Provided - 160 LF Required - 80 LF
Bus Canopy	Provided - 140 LF Required - 80 LF
Acreage	26 acres



Orange County Public Schools



Example Classroom



Example Science Lab



Example Computer Lab



Example Band Room



Example Media Center & Furniture



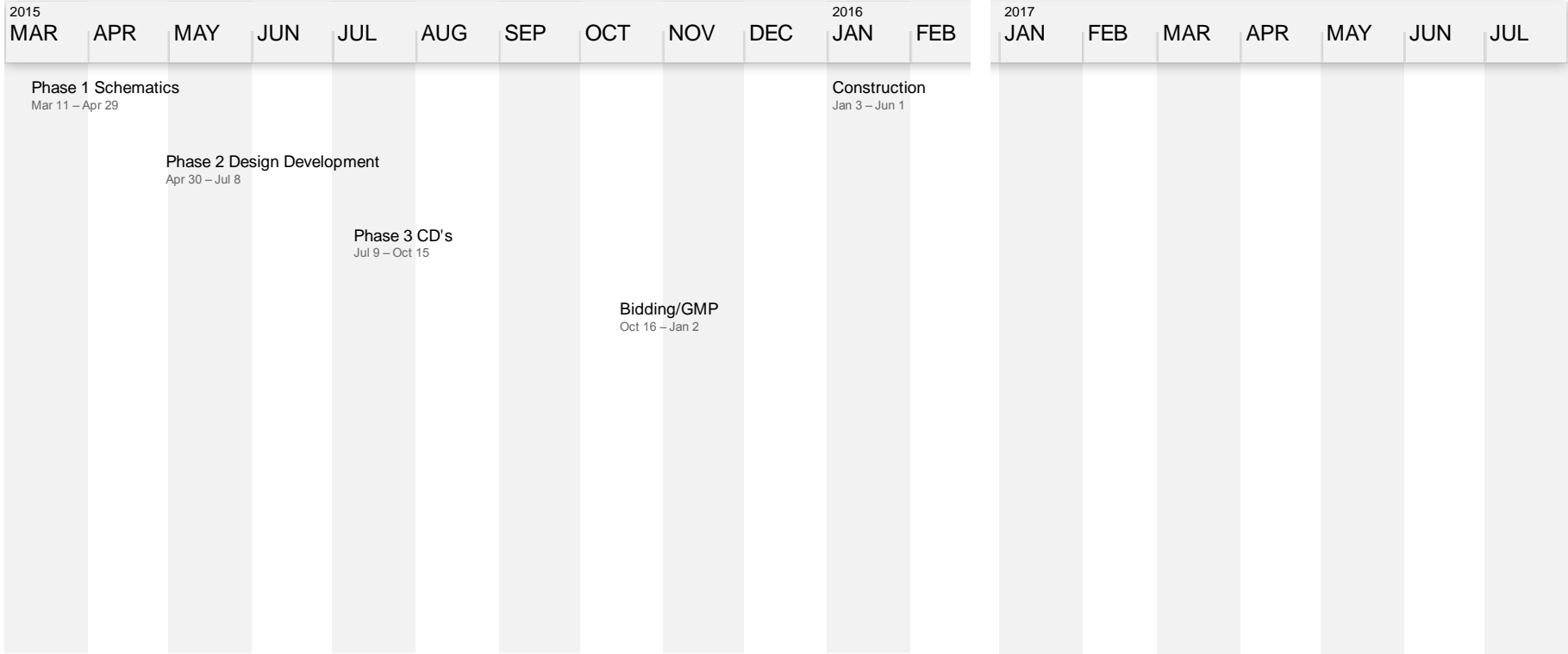
Example Multipurpose



Example Gymnasium



Orange County Public Schools



QUESTIONS?